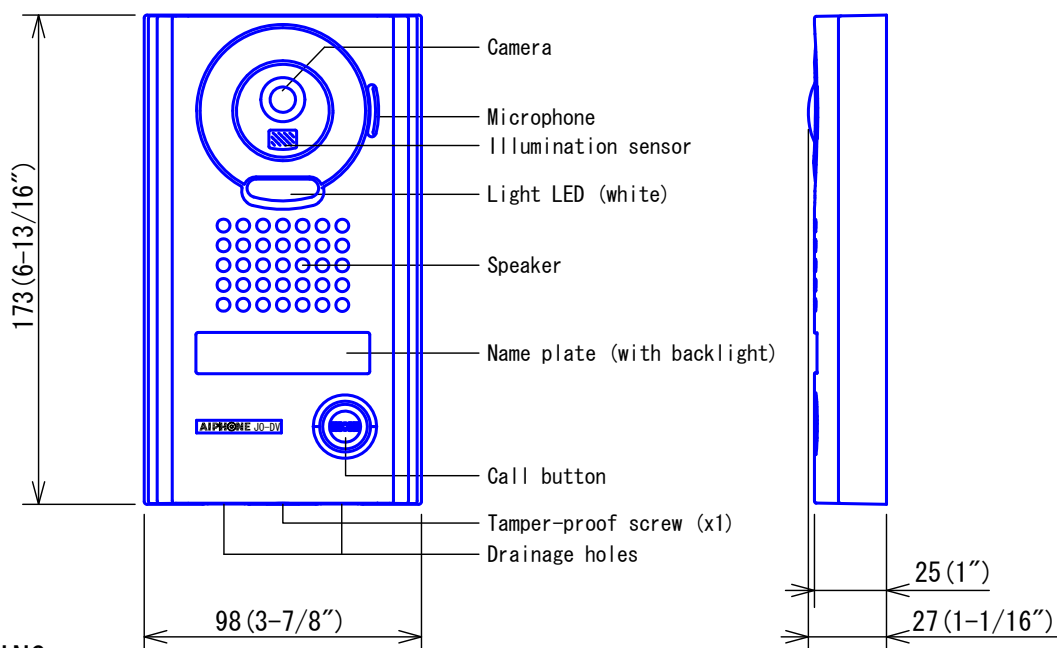
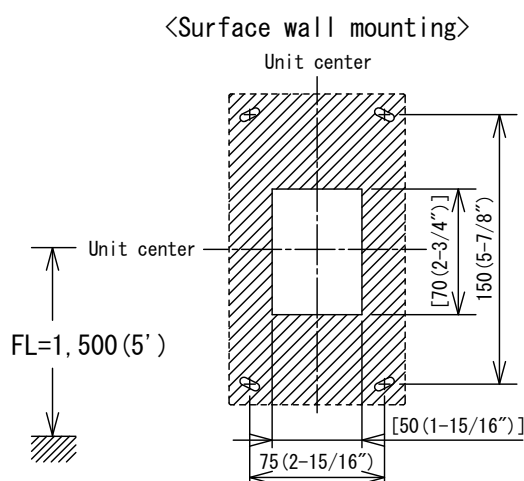


PRODUCT DRAWING

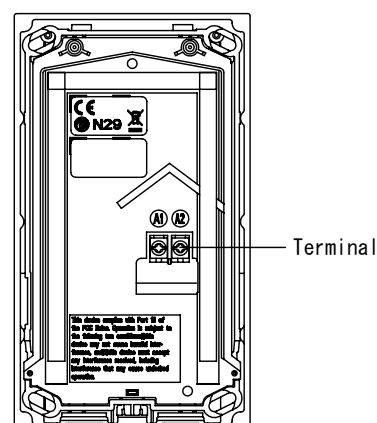


MOUNTING



[]: Opening cut out on the wall

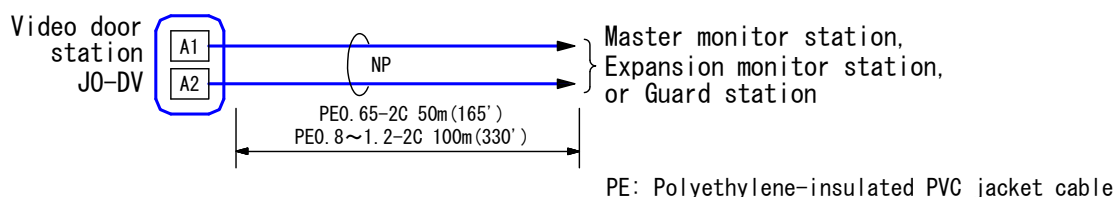
<Back view>



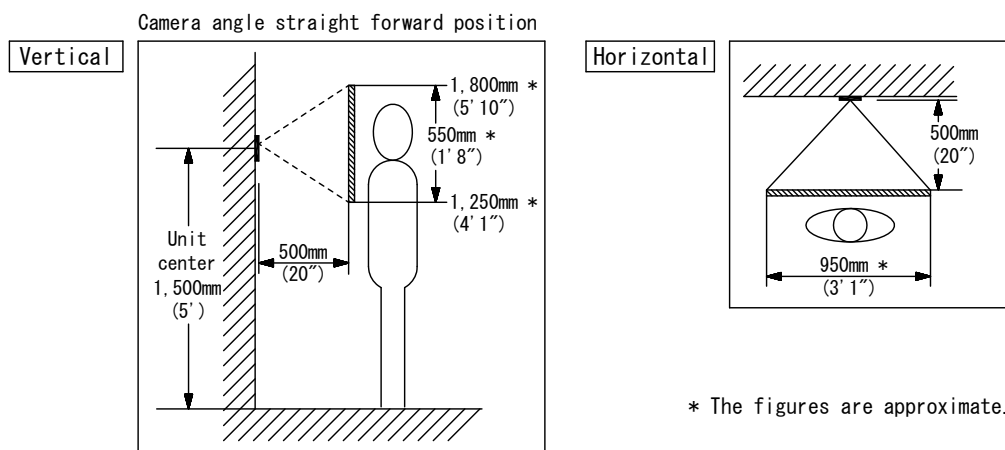
SPECIFICATIONS

Power source	Supplied from Master monitor station, Expansion monitor station, or Guard station			
Type of communication	Open voice hands-free communication			
Camera	1/4 inch color CMOS			
Minimum illumination	5 lux (approx.)			
Ambient temperature	-20~+60°C (-4~+140° F)			
Mounting	Surface wall mount (Directly to wall or electrical box)			
Electrical box	Single-gang box			
Material	Front panel: Zinc die cast. Main unit: Self-extinguishing PC + ABS resin			
Weight	650g (approx.) (1.44 lbs)			
Unit color	Front panel: Solid silver			
IP rating	IP54			
IK rating	IK08			
DESCRIPTION VIDEO DOOR STATION (Color, Vandal-resistant)	FIG. NAME PRODUCT DRAWING/SPECIFICATIONS		UNIT mm	DATE 3 December, 2018
MODEL NO. JO-DV	FIG. NO. 59284-1-2	PAGE 1/2	REVISION 3	AIPHONE

■ WIRING DIAGRAM

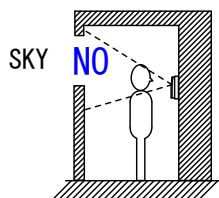


■ IMAGE VIEW AREA & MOUNTING HEIGHT

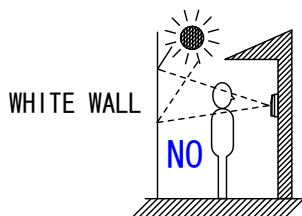


■ RESTRICTIONS

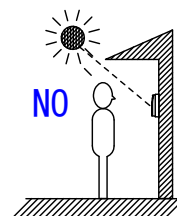
- Do not have rain escape openings on bottom covered with caulking seals.
- JO-DV door station is exclusively used for JO Series, and GT-MKB-N.
- Avoid installing JO-DV door station in the following locations;



At the entrance where background is sky in upper floors of building, etc.



The background of the standing caller's is white wall.



Where the standing location is strongly sunlit.

■ FUNCTIONS

- Initiating a call to and entering communication with Master monitor station, Expansion monitor station, or Guard station.
- Name plate is backlit constantly.
- White light LED turns on during low-light conditions when monitoring and talking status.

DESCRIPTION	(Color, Vandal-resistant)	FIG. NAME	UNIT	DATE
VIDEO DOOR STATION		WIRING/IMAGE/RESTR. /FCN.	mm	4 July, 2017
MODEL NO.		FIG. NO.	PAGE	REVISION
JO-DV		59284-2-2	2/2	2
AIPHONE				